

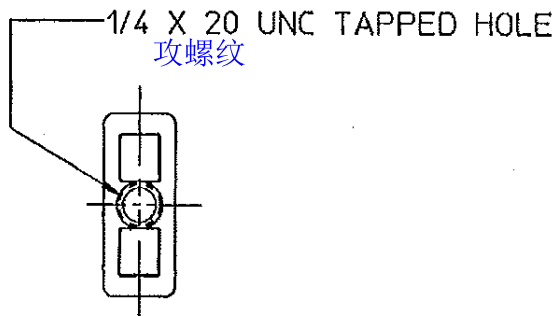
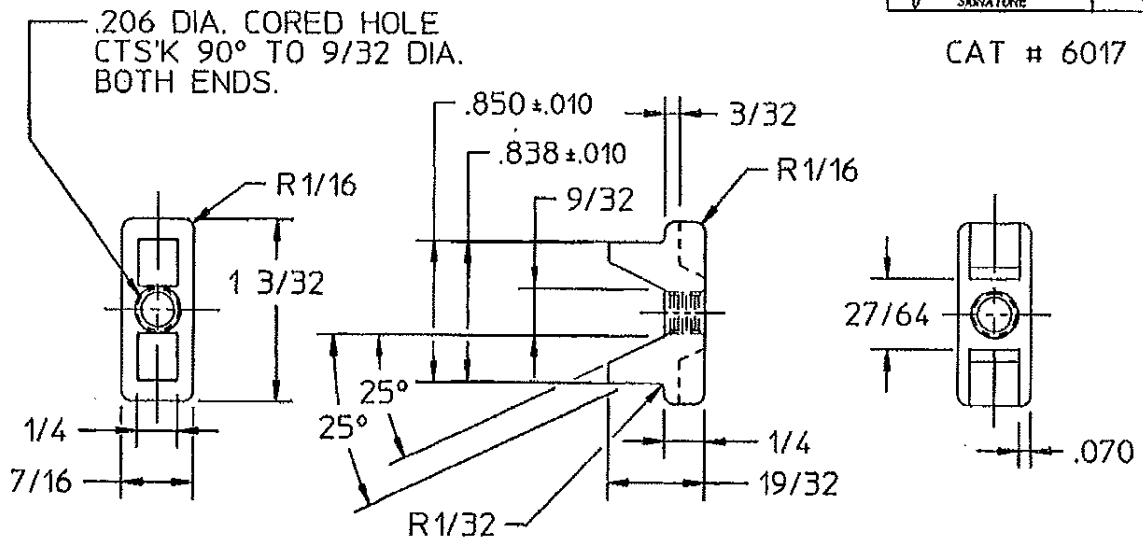
材料 : ZAMACK 3
数量 : 250 000件

REVISIONS

3 REDRAWN IN T&B FORMAT
CHANGED SCALE TO 1:1
ADDED FOUNDRY DETAILS
SEE ENGRG RLSE 103488
PROJ.ND52044

DRAWN BY	DATE
allens	10/21/96
ENGINEER NAME	DATE
jbecker	10/21/96
<i>XJ Becker</i> SIGNATURE	X 10/21/96

CAT # 6017



NOTES:

1. DRAFT INDICATED IS MAX. PER AMERICAN DIE CASTING STD, ADICI-E4-61.
2. USE GAGE NO. G-100 TO INSPECT CARRIER.
3. MATERIAL: ZINC DIE METAL ZAMACK #3 ASTM B86-58 AG-40A
4. FINISH: AS FABRICATED

ALL DIMENSIONS ON THIS DWG ARE IN UNITS AS CHECKED BELOW

ENGLISH ← INCH →
 METRIC ← mm →
 DUAL ← mm INCH →

UNLESS OTHERWISE SPECIFIED, DIMENSIONAL TOLERANCES ARE:

FRACTIONS ± 1/64
ANGLES ± 1°
DECIMALS ± .010

THIRD ANGLE PROJECTION

MATERIAL	SEE NOTE #2
FINISH	SEE NOTE #3
HEAT TREAT.	
TEST SPEC.	

DRAWN BY	DATE
JK	2/67
ENGINEER NAME	DATE
JP	2/15/67
X _____	X _____
SIGNATURE	

6017, CARRIER,
CHANNEL, MACHINING
DETAILS

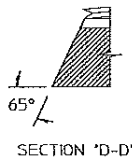
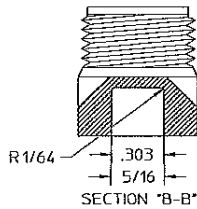
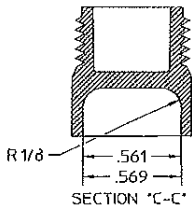
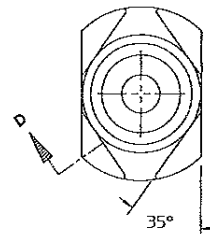
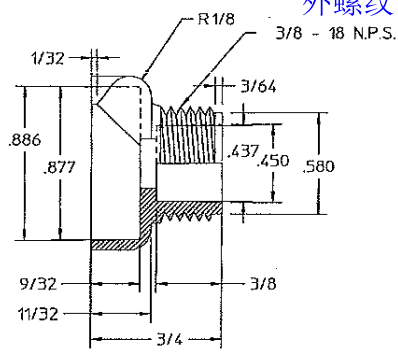
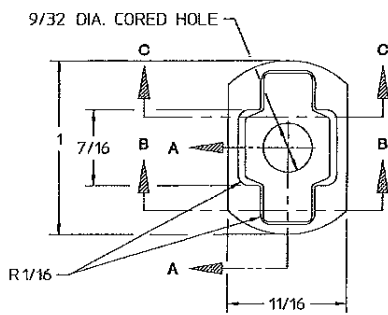
COMPUTER GENERATED
 HP-CAD ME-HYBRID

SIZE	SCALE	DWG. NO.
A	1:1	PA-3186

PROJ. NO. (SER NO.)	()	SHEET	REV
UNKNOWN		1 of 1	3

材料 : ZAMACK 3 数量 : 120 000件

外螺纹



- NOTES:
1. DRAFT INDICATED IS MAX. PER AMER. DIE CASTING STD. ADCl-E4-61
 2. MATERIAL: ZINC DIE METAL ZAMACK #3
 3. FINISH: AS FABRICATED

CAT # 6018-P1

REVISIONS	3	DATE	10/3/96
DRAWN IN	FORMAT	DATE	10/3/96
SEE ENGRG FILE 03488		DATE	10/3/96
PROJ. NO. 52044		DATE	10/3/96
CLIENTS		DATE	10/3/96
ENGINEER NAME		DATE	10/3/96
DRW. NO.		DATE	10/3/96
DESIGNER		DATE	10/3/96
CHECKER		DATE	10/3/96

ALL DIMENSIONS ON THIS DRAWING ARE IN UNITS AS CIRCLED UNLESS OTHERWISE SPECIFIED. UNLESS OTHERWISE SPECIFIED, DIMENSIONS ARE IN INCHES.	MATERIAL: SEE NOTE #2	FINISH: SEE NOTE #3	GRD	DATE	6018-P1, STUD, FIXTURE, FOUNDRY DETAILS
UNLESS OTHERWISE SPECIFIED, DIMENSIONS ARE IN INCHES.	HEAT TREAT:	HEAT TREAT:	ENGRG NAME	DATE	
FRACTIONS ± 1/64	TEST SPEC:	TEST SPEC:	RS	DATE	[COMPUTER GENERATED] SIZE SCALE DWG NO. B 2:1 PA-3187 PROJ. NO. OR NO. UNKNOWN () SHEET 1 of 1 REV 3
ANGLES ± 1°					
DECIMALS ± .010					
THIRD ANGLE PROJECTION					

24-Oct-96 16:43:43

DA-5928

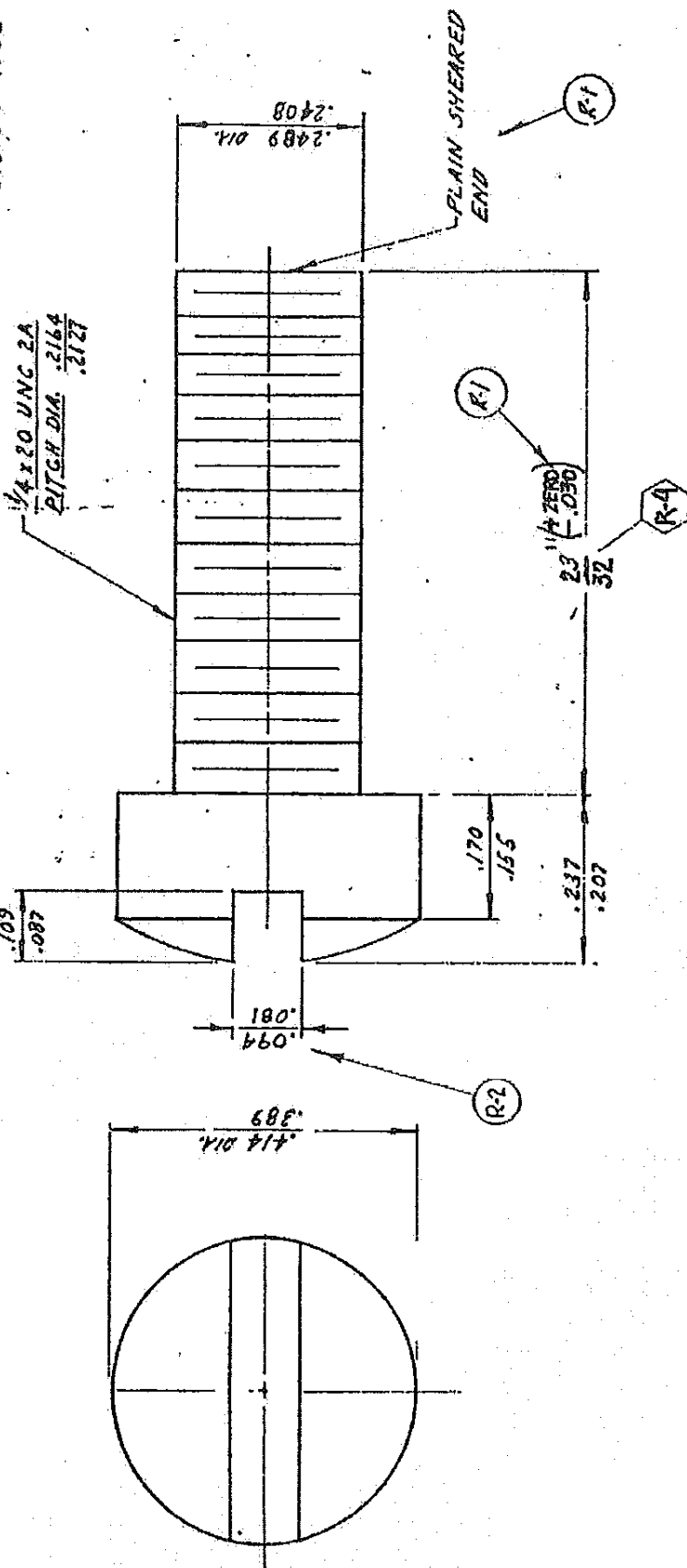
REF: AMERICAN STD.
8/8.6.3-1962

数量: 200 000件

平头螺丝: 1/4-20X23/32 UNC 2A 一字螺钉

总长: 螺纹长18mm

材料: 碳钢, 镀锌



PART # 500324

DE-TB-TBMFI-500324-C

1/4-20 x 23/32 FILLISTER HEAD
STEEL MACHINE SCREW

NO.	DATE	REVISION DESCRIPTION	BY	CK'D.
1	12-29-70	REMOVED LEAD ATOL WAS 10-1/8"	EJS	ST
2	7-29-71	WAS .075/.064	W.M.	RST
3	2-4-74	WAS 11/16 16.	JK	G.D.
4	4-21-04	23/32" LENGTH WAS 3/4"	JD	JD

MAT'L: MILD STEEL
FINISH: ELEC-GALV. D0015 BY S.C.
TOLERANCES
FRACT. ± DEC. ± ANGLES ±
UNLESS OTHERWISE SHOWN ON DRAWING

DR. BY	J.J.K.	SCALE	5X SIZE	DRAWING NO.
CHK. BY	G.R.D.	DATE	3-4-70	DA-5928
APP.	<i>[Signature]</i>	PART NO.	COING.	
SHEET	OF	REV.	4	

