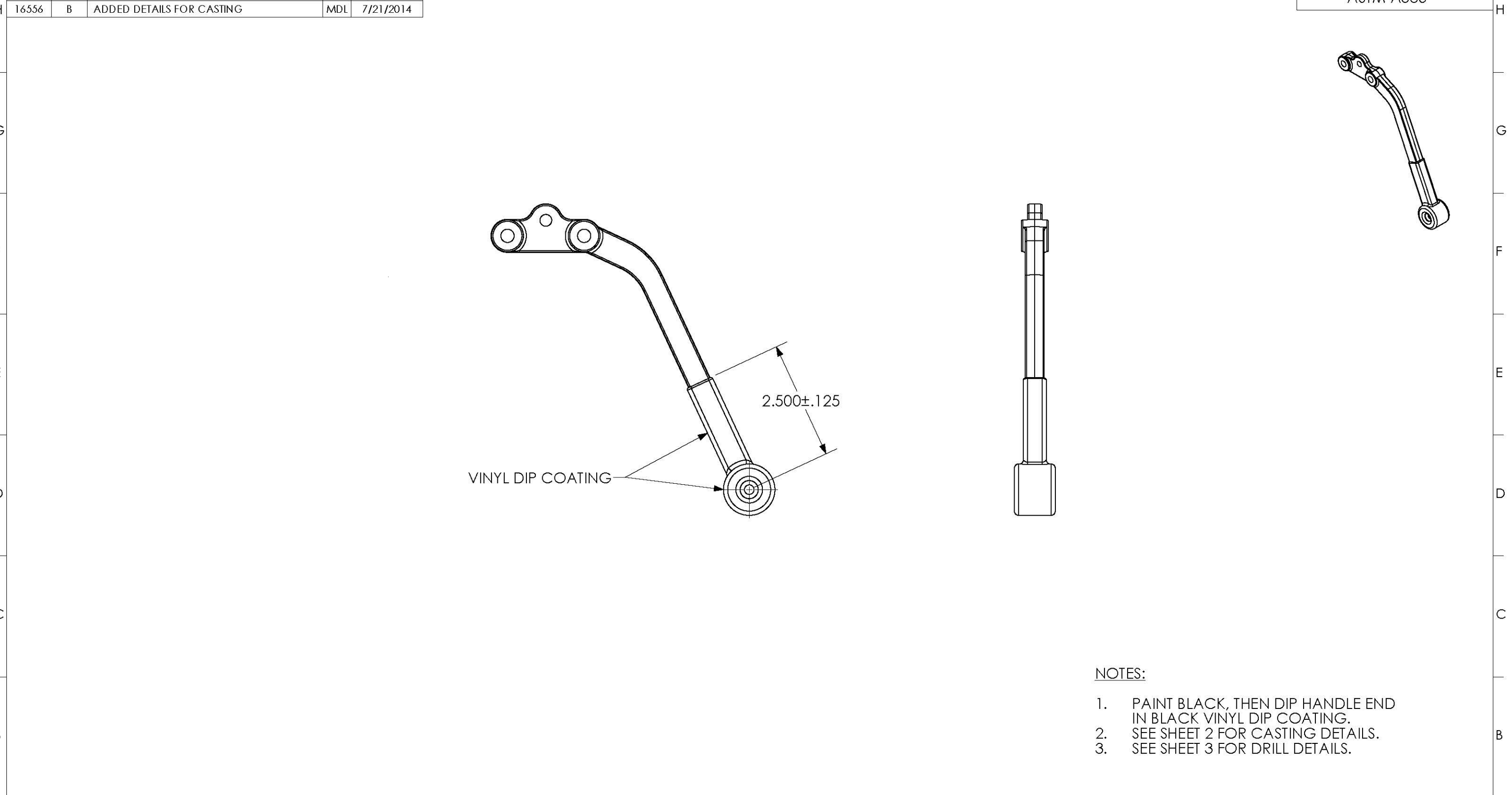


REVISIONS				
ECN	REV	DESCRIPTION	BY	DATE
16303	A	RELEASE DRAWING	MDL	6/10/2014
16556	B	ADDED DETAILS FOR CASTING	MDL	7/21/2014

MATERIAL
ASTM A536



NOTES:

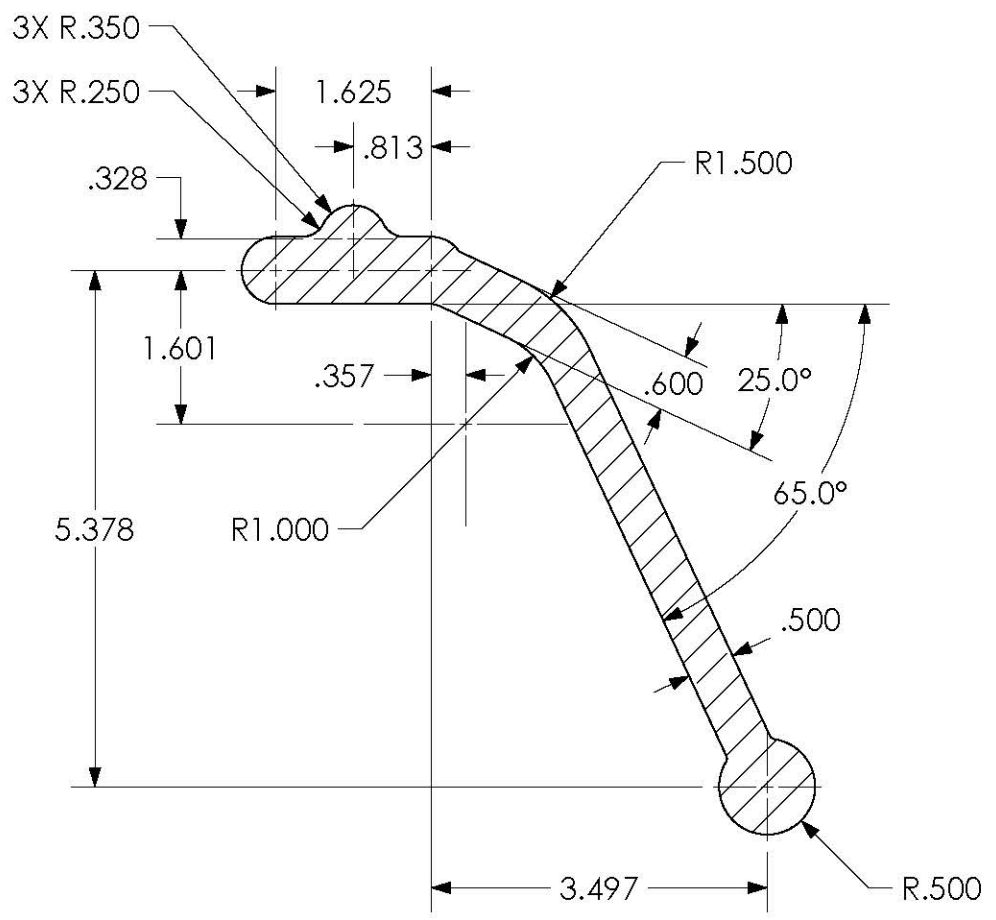
1. PAINT BLACK, THEN DIP HANDLE END IN BLACK VINYL DIP COATING.
2. SEE SHEET 2 FOR CASTING DETAILS.
3. SEE SHEET 3 FOR DRILL DETAILS.

PAINT BLACK PER SPECIFICATION DRAWING 1006048		PAINT SPECIFICATION DRAWING 1006048		DIMENSIONS ARE IN INCHES UNLESS OTHERWISE SPECIFIED DIMENSIONS APPLY TO FINISHED PART. ROUGH CUTS MUST INCLUDE APPROPRIATE STOCK ALLOWANCE FOR MACHINED PARTS. (REFERENCE DIMENSIONS) REFER TO TABLES FOR GENERAL TOLERANCES SHEET SCALE: 1:4										APPROVALS DRAWN BY MDL CHECKED BY TWJ		DATE 06/10/2014 07/23/2014		140630-2 LEVER, FOR 141000 BOX, 65 DEGREES PURCHASED PARTS / MULTIPLE		REV B				
GENERAL FABRICATION TOLERANCE - INCH										SURFACE: 250					GENERAL MACHINING TOLERANCE					SURFACE: 125				
>	0.000	3.000	12.000	24.000	48.000	96.000	120.000	240.000	0.000	1.000	3.000	6.000	12.000	36.000										
≤	3.000	12.000	24.000	48.000	96.000	120.000	240.000	~	1.000	3.000	6.000	12.000	36.000	~										
±	0.015	0.031	0.063	0.094	0.125	0.188	0.250	0.500	0.005	0.010	0.015	0.031	0.063	0.094										
ANGLE	±0.5°		±1.0°		±2.0°		±3.0°		±0.1°		±0.3°		±0.5°											
										THIRD ANGLE PROJECTION		SHT SIZE: B		SHT 1 OF 3		PART WEIGHT: 0.70 LBS								

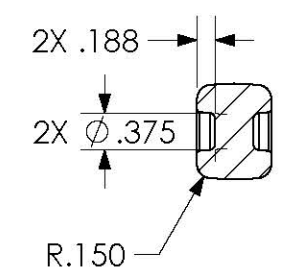
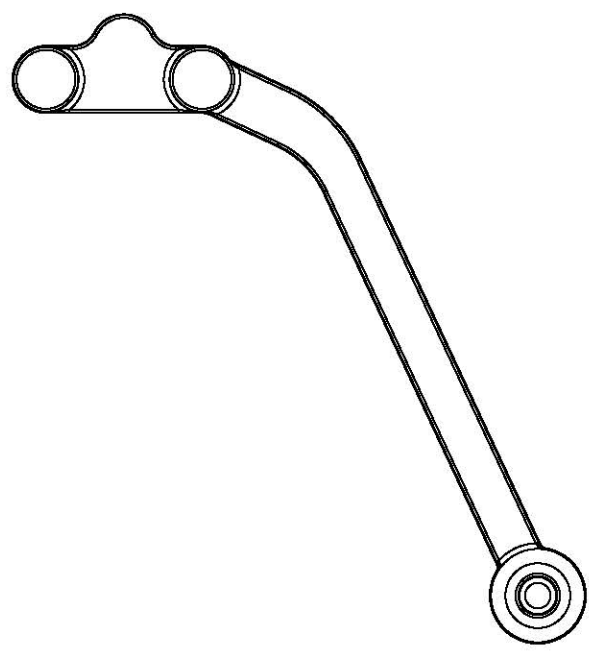
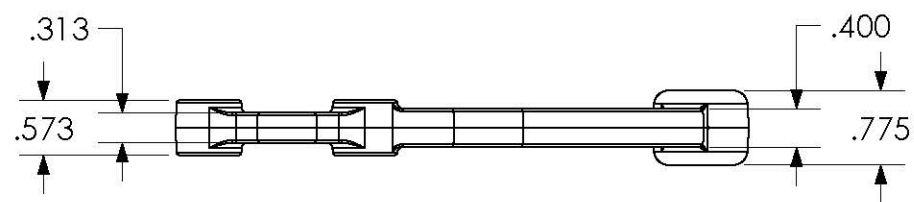
1 2 3 4 5 6 7 8 9 10 11 12

MATERIAL
ASTM A536

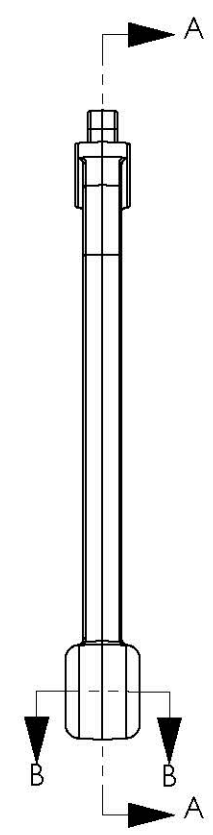
H
G
F
E
D
C
B
A



SECTION A-A



SECTION B-B



CASTING DETAILS

NOTES:

- 3° DRAFT MAX.
- ALL FEATURE FILLETS TO BE .060 MAX.
- ALL FEATURE EDGE RADII TO .030 MAX. UNLESS OTHERWISE NOTED.
- PART TO FREE OF FLASH AND IMPERFECTIONS.

PAINT BLACK PER SPECIFICATION DRAWING 1006048

GENERAL FABRICATION TOLERANCE - INCH									GENERAL MACHINING TOLERANCE					
>	0.000	3.000	12.000	24.000	48.000	96.000	120.000	240.000	0.000	1.000	3.000	6.000	12.000	36.000
≤	3.000	12.000	24.000	48.000	96.000	120.000	240.000	~	1.000	3.000	6.000	12.000	36.000	~
±	0.015	0.031	0.063	0.094	0.125	0.188	0.250	0.500	0.005	0.010	0.015	0.031	0.063	0.094
ANGLE	±0.5°		±1.0°		±2.0°		±3.0°		±0.1°		±0.3°		±0.5°	

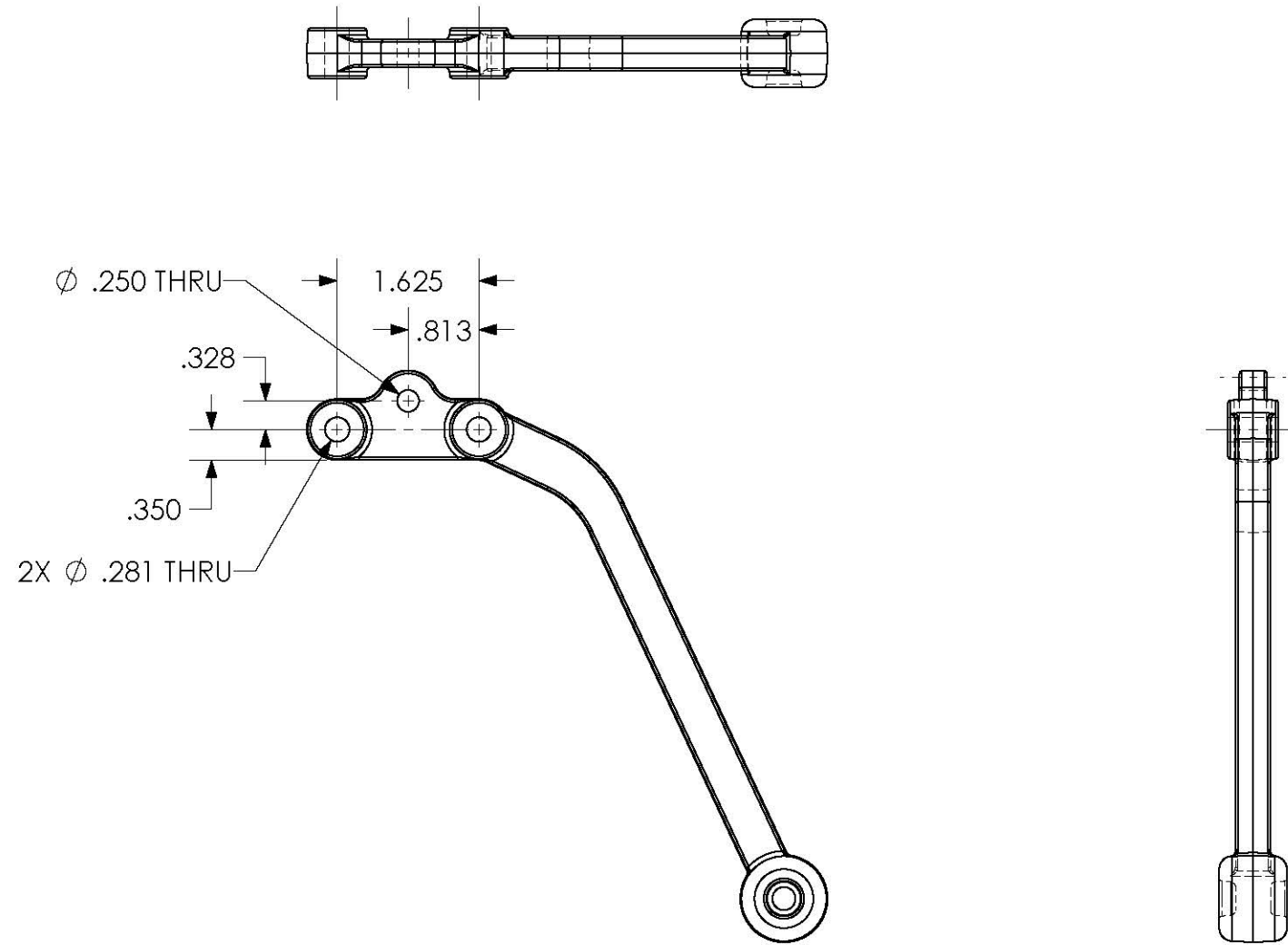
DIMENSIONS ARE IN INCHES UNLESS OTHERWISE SPECIFIED
 DIMENSIONS APPLY TO FINISHED PART. ROUGH CUTS MUST INCLUDE APPROPRIATE STOCK ALLOWANCE FOR MACHINED PARTS.
 (REFERENCE DIMENSIONS)
 REFER TO TABLES FOR GENERAL TOLERANCES
 SHEET SCALE: 1:4

APPROVALS	DATE
DRAWN BY MDL	06/10/2014
CHECKED BY TWJ	07/23/2014

140630-2
 LEVER, FOR 141000 BOX, 65 DEGREES
 PURCHASED PARTS / MULTIPLE
 PART WEIGHT: 0.70 LBS
 REV B

1 2 3 4 5 6 7 8 9 10 11 12

MATERIAL
ASTM A536



DRILL DETAILS

PAINT BLACK PER PAINT SPECIFICATION DRAWING 1006048

GENERAL FABRICATION TOLERANCE - INCH								SURFACE: $\sqrt{250}$								GENERAL MACHINING TOLERANCE								SURFACE: $\sqrt{125}$								
>	0.000	3.000	12.000	24.000	48.000	96.000	120.000	240.000	0.000	1.000	3.000	6.000	12.000	36.000	0.000	1.000	3.000	6.000	12.000	36.000	0.000	1.000	3.000	6.000	12.000	36.000	0.000	1.000	3.000	6.000	12.000	36.000
≤	3.000	12.000	24.000	48.000	96.000	120.000	240.000	~	1.000	3.000	6.000	12.000	36.000	~	1.000	3.000	6.000	12.000	36.000	~	1.000	3.000	6.000	12.000	36.000	~	1.000	3.000	6.000	12.000	36.000	~
±	0.015	0.031	0.063	0.094	0.125	0.188	0.250	0.500	0.005	0.010	0.015	0.031	0.063	0.094	0.005	0.010	0.015	0.031	0.063	0.094	0.005	0.010	0.015	0.031	0.063	0.094	0.005	0.010	0.015	0.031	0.063	0.094
ANGLE	±0.5°				±1.0°				±2.0°				±3.0°				±0.1°				±0.3°				±0.5°							

DIMENSIONS ARE IN INCHES UNLESS OTHERWISE SPECIFIED

DIMENSIONS APPLY TO FINISHED PART. ROUGH CUTS MUST INCLUDE APPROPRIATE STOCK ALLOWANCE FOR MACHINED PARTS.

(REFERENCE DIMENSIONS)

REFER TO TABLES FOR GENERAL TOLERANCES

SHEET SCALE: 1:4

APPROVALS	DATE
DRAWN BY MDL	06/10/2014
CHECKED BY TWJ	07/23/2014

140630-2
LEVER, FOR 141000 BOX, 65 DEGREES

PURCHASED PARTS / MULTIPLE

THIRD ANGLE PROJECTION	SHT SIZE: B	SHT 3 OF 3	PART WEIGHT: 0.70 LBS
------------------------	-------------	------------	-----------------------

REV B